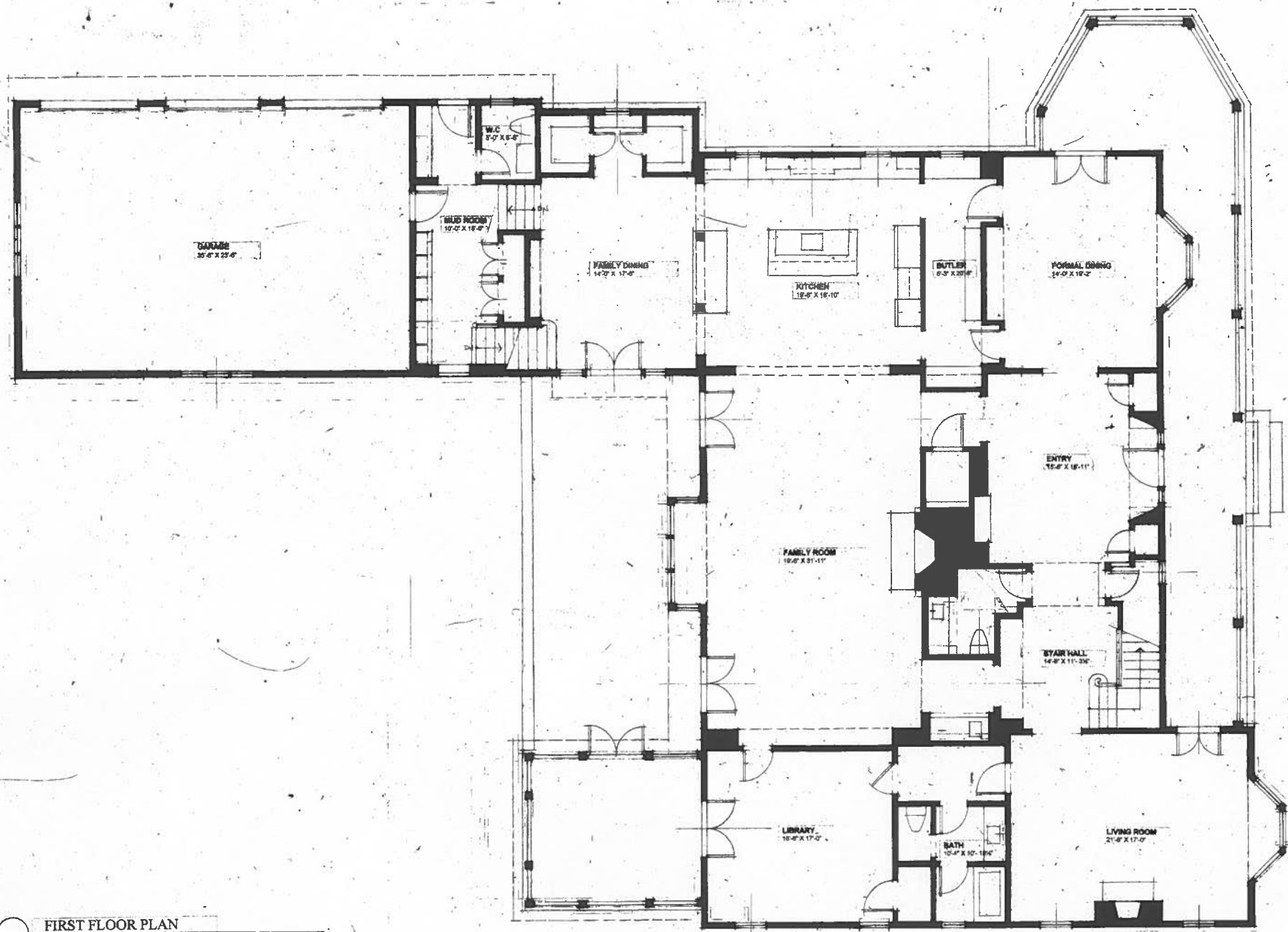




6740 MELODY LANE
BETHESDA, MD 20817

FREDERICK TAYLOR, AIA
1433 OTIS STREET NE
WASHINGTON DC, 20017
(202) 635-8087
www.cherychsearchitect.com

RASEVIC CONSTRUCTION
5200 RIVER ROAD, BUILDING 6
BETHESDA, MD 20816
(301) 986-6900
www.rasevic.com



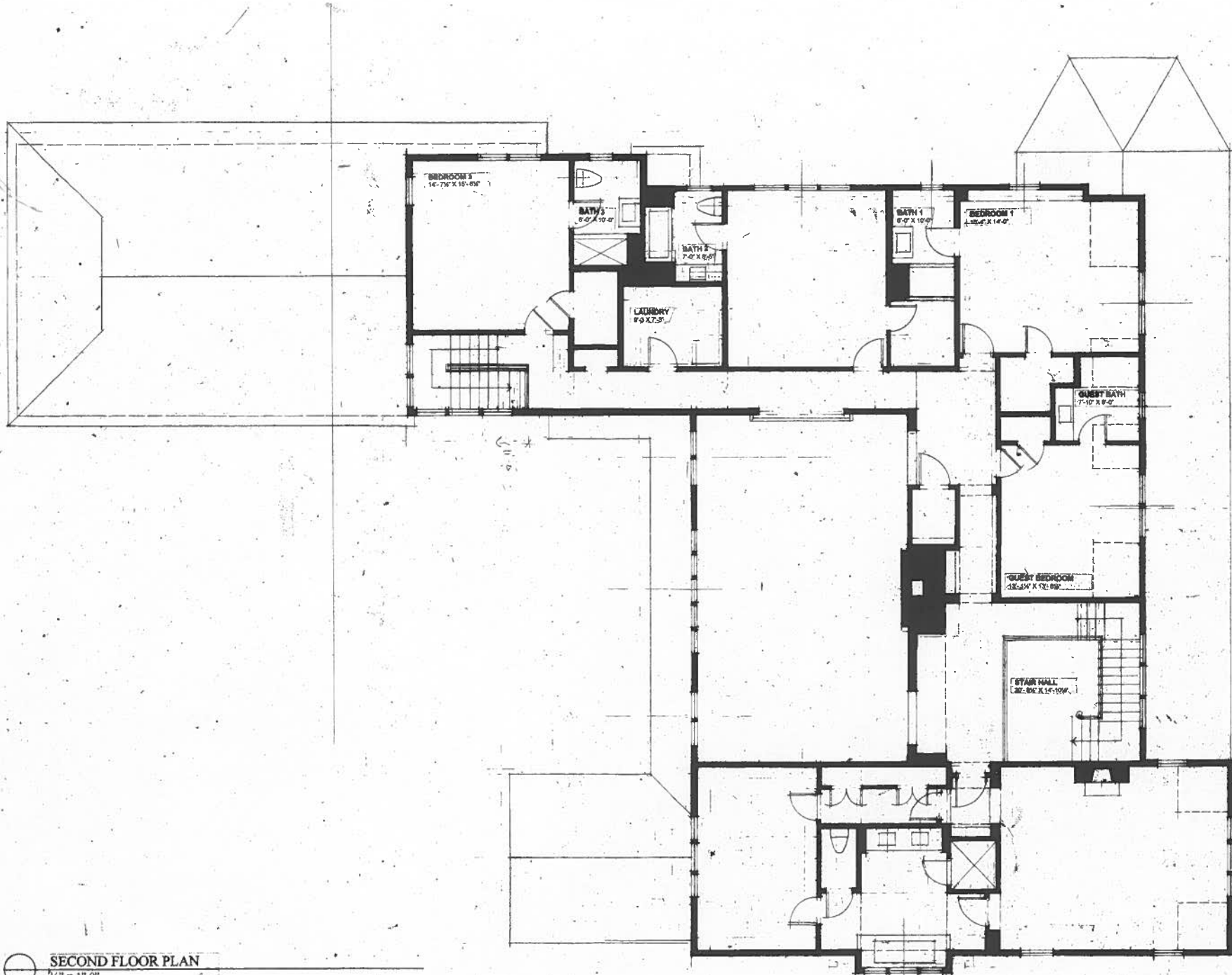
FIRST FLOOR PLAN
 1/4" = 1'-0"

FREDERICK TAYLOR, AIA
 143 OTIS STREET, NE
 WASHINGTON DC, 20017
 (202) 654-8877
 www.ctary@aiaarchitects.com

RASEVIC CONSTRUCTION
 5280 BYZZA ROAD, BUILDING 6
 BETHESDA, MD 20816
 (301) 944-6900
 www.rasevic.com

6740 MELODY LANE
 BETHESDA, MD 20817

FIRST FLOOR PLAN
 1/4" = 1'-0"



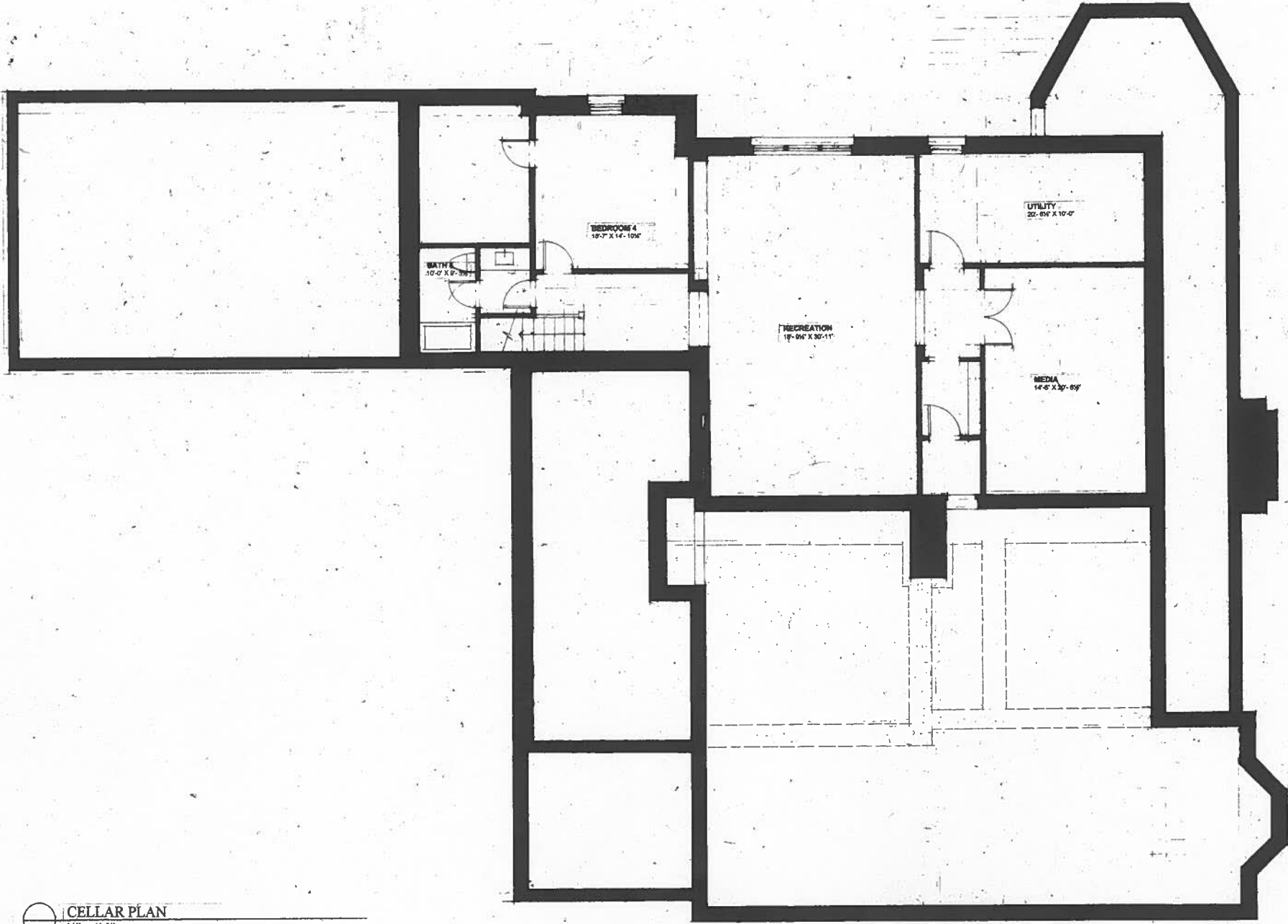

SECOND FLOOR PLAN
 1/4" = 1'-0"


FREDERICK TAYLOR, AIA
 1433 CITIES STREET NE
 WASHINGTON DC, 20017
 (202) 635-4007
 www.ftrv.com

RALPHIC CONSTRUCTION
 1400 RIVERS ROAD BUILDING 6
 BETHESDA, MD 20814
 (301) 946-6900
 www.ralphic.com

6740 MELODY LANE
BETHESDA, MD 20817

SECOND FLOOR PLAN
 1/4" = 1'-0"




CELLAR PLAN
 1/4" = 1'-0"

FREDERICK TAYLOR, AIA
 1430 LOTS STREET NW
 WASHINGTON DC, 20017
 (202) 635-8897
 www.ftaylorassociates.com

RASEBYC CONSTRUCTION
 2800 BIRNDA BUILDING 6
 BETHESDA, MD 20816
 (301) 986-6906
 www.rasebyc.com

6740 MELODY LANE
BETHESDA, MD 20817

CELLAR PLAN
 1/4" = 1'-0"

A2.1