



RASEVIC CONSTRUCTION
5200 RIVER ROAD, BLDG. 6
BETHESDA, MD 20816
(301) 986-6900
www.rasevic.com

136 GRAFTON STREET
CHEVY CHASE, MD 20815
GRAFTON STREET FACADE

1/4" = 1'-0"

FREDERICK TAYLOR, AIA
1433 OTIS STREET NE
WASHINGTON, DC 20017
(202) 635-8087
www.chevychasearchitect.com

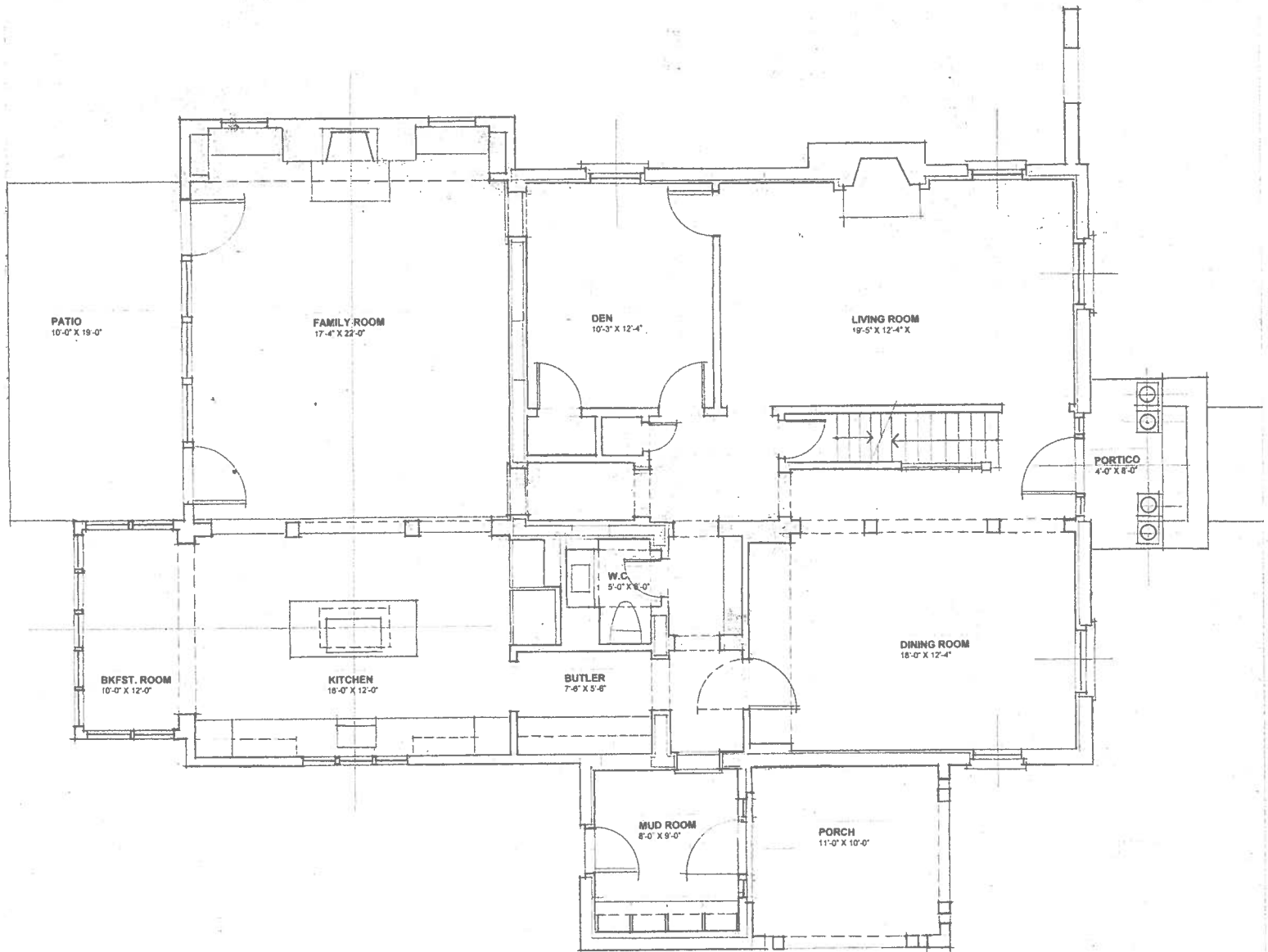


RASEVIC CONSTRUCTION
5200 RIVER ROAD, BLDG. 6
BETHESDA, MD 20816
(301) 986-6900
www.rasevic.com

136 GRAFTON STREET
CHEVY CHASE, MD 20815
GRAFTON STREET FACADE

1/4" = 1'-0"

FREDERICK TAYLOR, AIA
1433 OTIS STREET NE
WASHINGTON, DC 20017
(202) 635-8087
www.chevychasearchitect.com

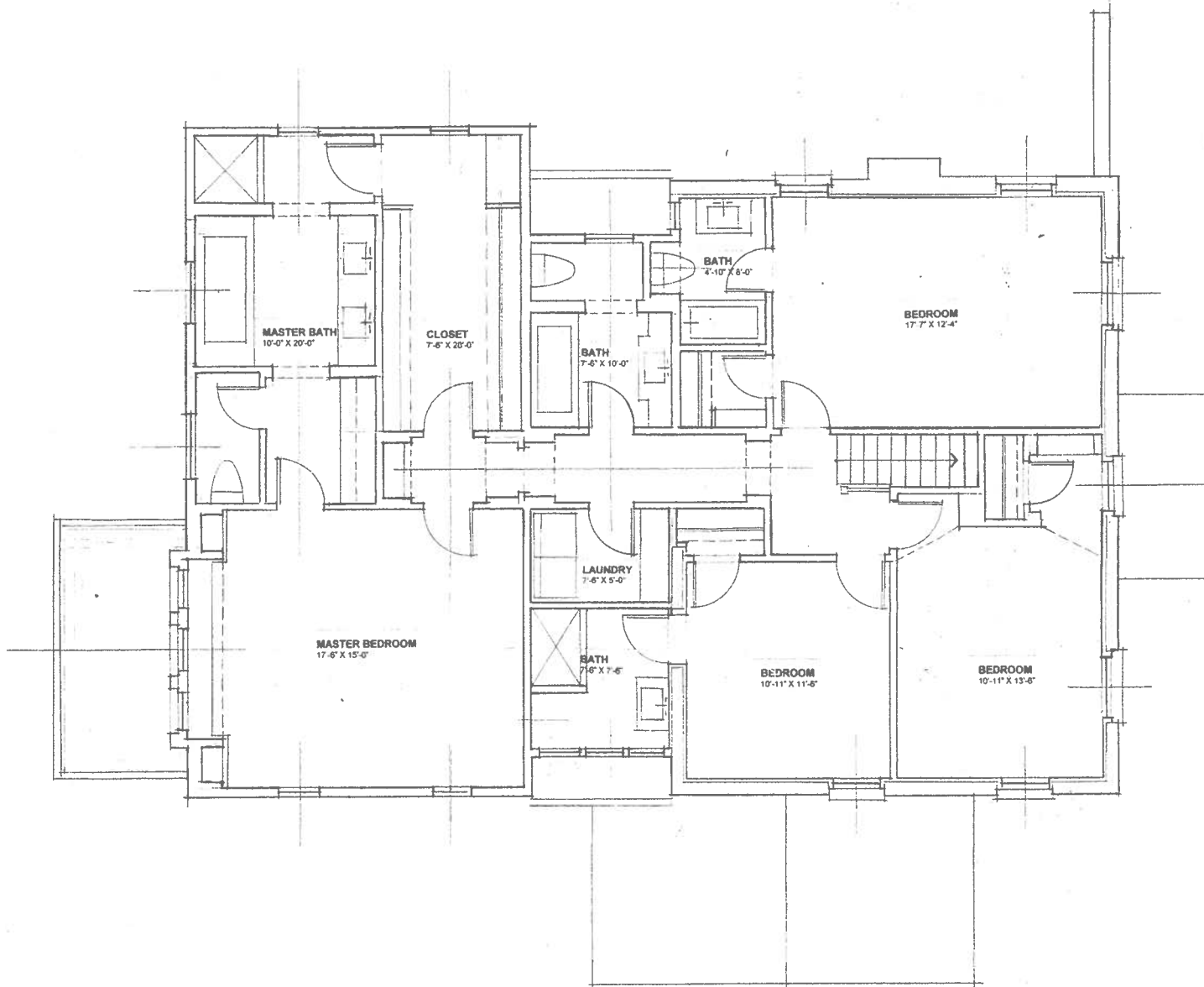


RASEVIC CONSTRUCTION
 5200 RIVER ROAD, BLDG. 6
 BETHESDA, MD 20816
 (301) 986-6900
 www.rasevic.com

136 GRAFTON STREET
 CHEVY CHASE, MD 20815
 FIRST FLOOR PLAN

1/4" = 1'-0"

FREDERICK TAYLOR, AIA
 1433 OTIS STREET NE
 WASHINGTON, DC 20017
 (202) 635-8087
 www.chevychasearchitect.com

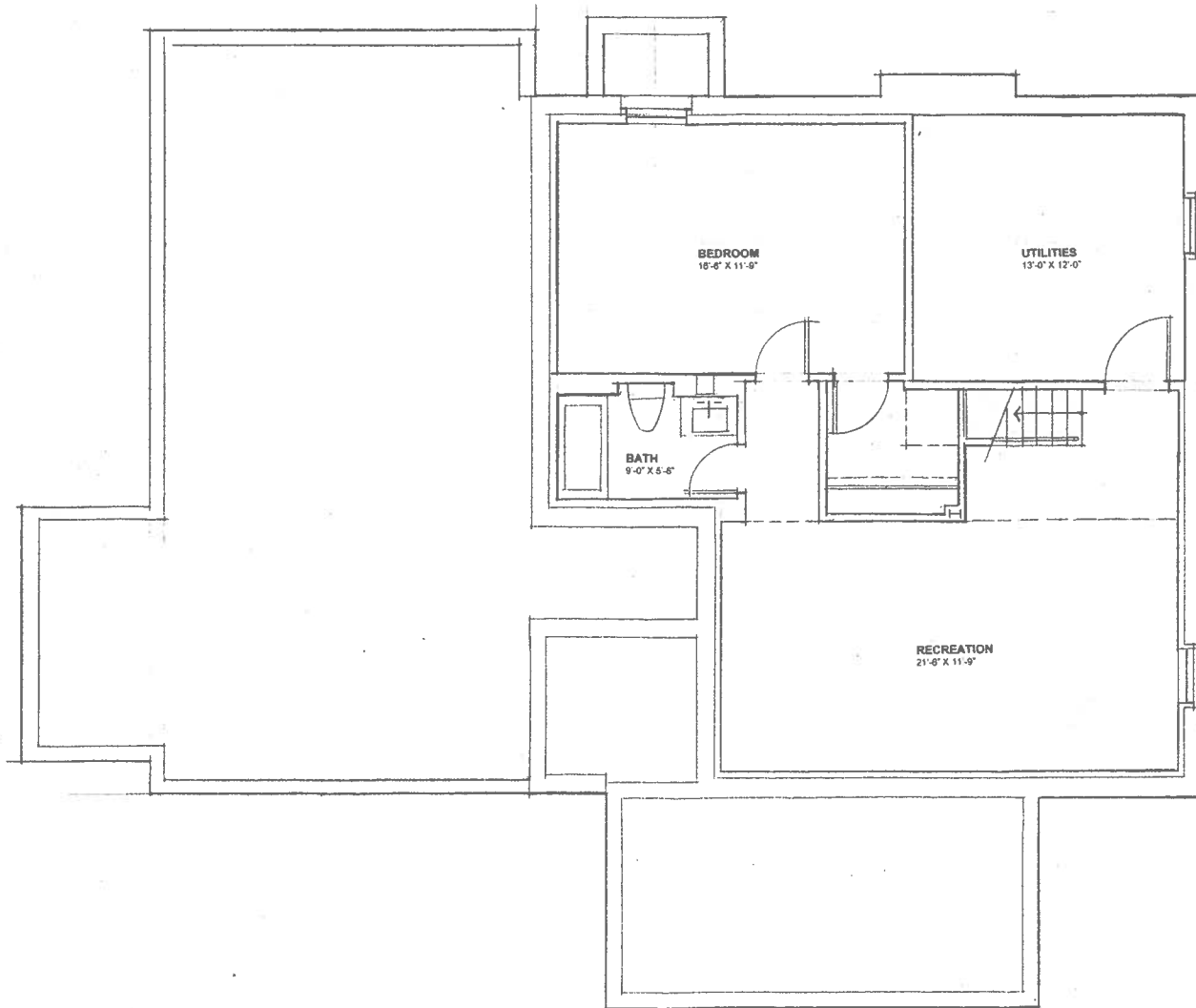


RASEVIC CONSTRUCTION
 5280 RIVER ROAD, BLDG. 6
 BETHESDA, MD 20816
 (301) 986-6900
 www.rasevic.com

136 GRAFTON STREET
 CHEVY CHASE, MD 20815
SECOND FLOOR PLAN

1/4" = 1'-0"

FREDERICK TAYLOR, AIA
 1433 OTIS STREET NE
 WASHINGTON, DC 20017
 (202) 635-8087
 www.chevychasearchitect.com



RASEVIC CONSTRUCTION
5200 RIVER ROAD, BLDG. 6
BETHESDA, MD 20816
(301) 986-6900
www.rasevic.com

136 GRAFTON STREET
CHEVY CHASE, MD 20815

FREDERICK TAYLOR, AIA
1433 OTIS STREET NE
WASHINGTON, DC 20017
(202) 635-8087
www.chevychasearchitect.com

CELLAR PLAN

1/4" = 1'-0"